



EUROTRUSS

EUROTRUSS BV
Castorweg 2
8938 BE Leeuwarden
The Netherlands

E-mail: info@eurotruss.com
Website: www.eurotruss.com
Telephone: +31 (0)58 215 88 88
Telefax: +31 (0)58 215 81 11

P.O. Box 7511 • 8903 JM Leeuwarden • The Netherlands

Eurotruss AR10 8x6

Project: PO201940346

Contents:

Encoding covers:	2
Additional parts:	3
Installation instructions roof:.....	5
Installation instructions backwall cover:.....	11
Installation instructions sidewall cover:	14
Installation instructions flap:	17
Dismount:.....	18
Folding tarpaulin:	19



EUROTRUSS


EUROTRUSS BV
Castorweg 2
8938 BE Leeuwarden
The Netherlands

E-mail: info@eurotruss.com
Website: www.eurotruss.com
Telephone: +31 (0)58 215 88 88
Telefax: +31 (0)58 215 81 11


P.O. Box 7511 • 8903 JM Leeuwarden • The Netherlands

Encoding covers:

All covers are featured with a cover code, this is printed on a label.
You can find the labels viewing form the inside at front-right and back-left.
The label information consists of:

 EUROTRUSS	
shortcut & number	color
detailed discription	
purchase number	date of production

For example, Roofcover PVC Top:

 EUROTRUSS	
RF-AR10-T86	black (RAL 9005)
Roofcover PVC Top AR10 8x6m	
PO201940346	10.04.2019



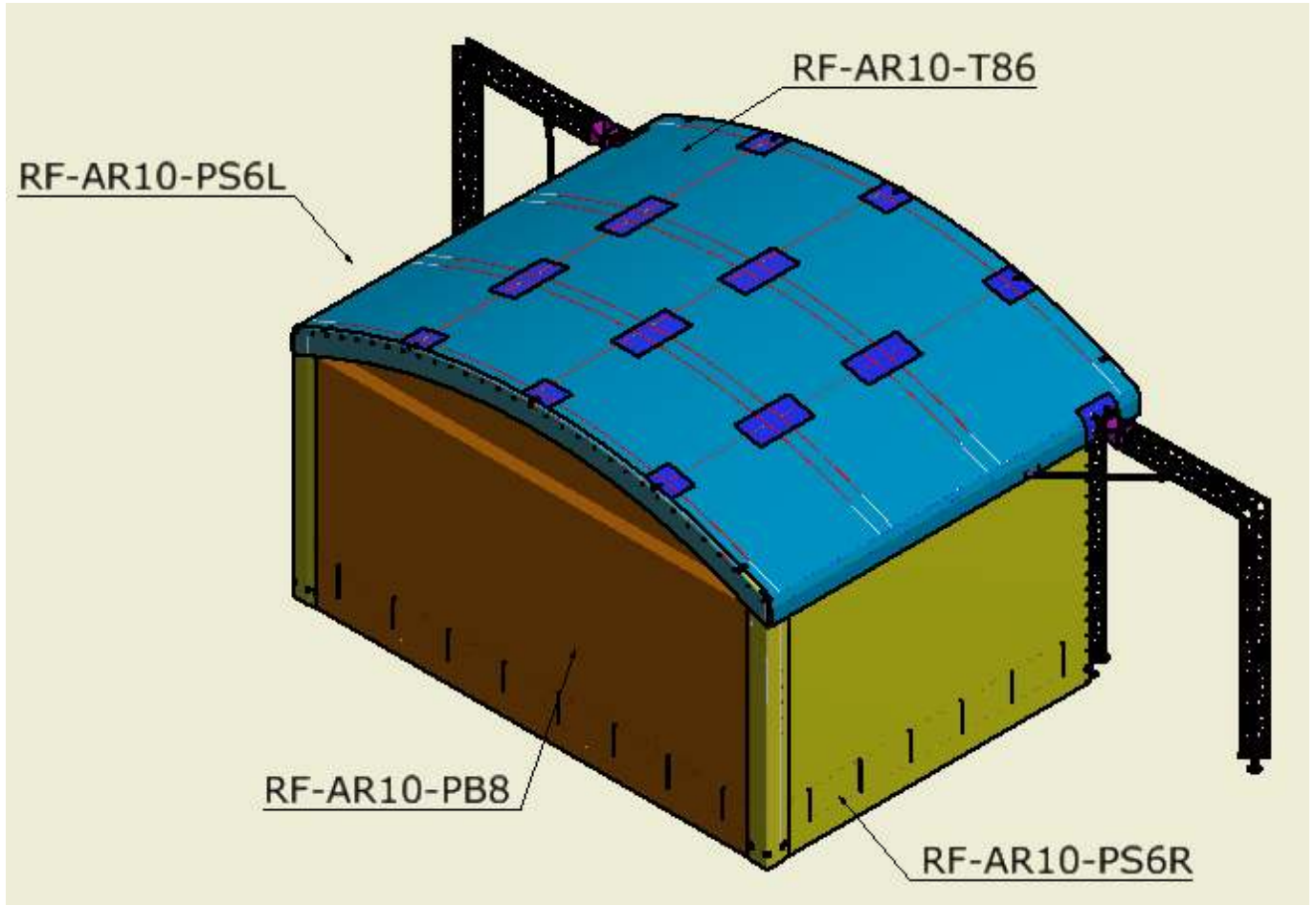
EUROTRUSS

EUROTRUSS BV
Castorweg 2
8938 BE Leeuwarden
The Netherlands

E-mail: info@eurotruss.com
Website: www.eurotruss.com
Telephone: +31 (0)58 215 88 88
Telefax: +31 (0)58 215 81 11

P.O. Box 7511 • 8903 JM Leeuwarden • The Netherlands

Covers:



In both bags you got following small parts :

Additional parts:

Also, you got additional parts:

Lashing strap (25 mm 2,5m band)

- to fix the roof at front- and backend
- to tighten the roof at right and left side





EUROTRUSS

EUROTRUSS BV
Castorweg 2
8938 BE Leeuwarden
The Netherlands

E-mail: info@eurotruss.com
Website: www.eurotruss.com
Telephone: +31 (0)58 215 88 88
Telefax: +31 (0)58 215 81 11

P.O. Box 7511 • 8903 JM Leeuwarden • The Netherlands

Velcro protector (140x290mm)

- to protect the tarpaulin from damage at the truss connections



Rubberloop with S-Hook

- to connect the roof at front- and backend to the truss
- to fix the end of the Flap



Rubberloop 300mm

- to connect the walls to the truss





EUROTRUSS

EUROTRUSS BV
Castorweg 2
8938 BE Leeuwarden
The Netherlands

E-mail: info@eurotruss.com
Website: www.eurotruss.com
Telephone: +31 (0)58 215 88 88
Telefax: +31 (0)58 215 81 11

P.O. Box 7511 • 8903 JM Leeuwarden • The Netherlands

Installation instructions roof:

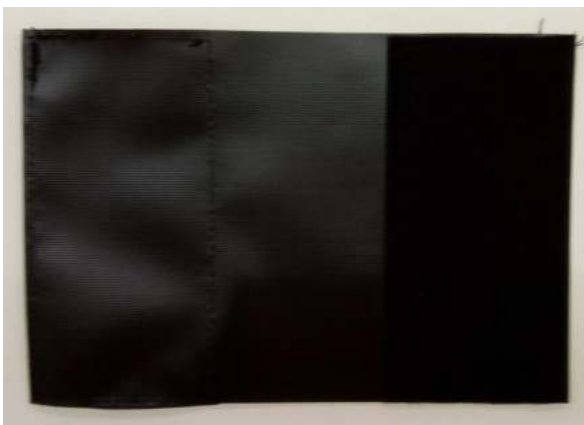
RF-AR10-T86

Step 1:

Before mounting the roof tarpaulin connections between trusselements



must be covered, using the Velcro protectors



Velcro protector (140x290mm)



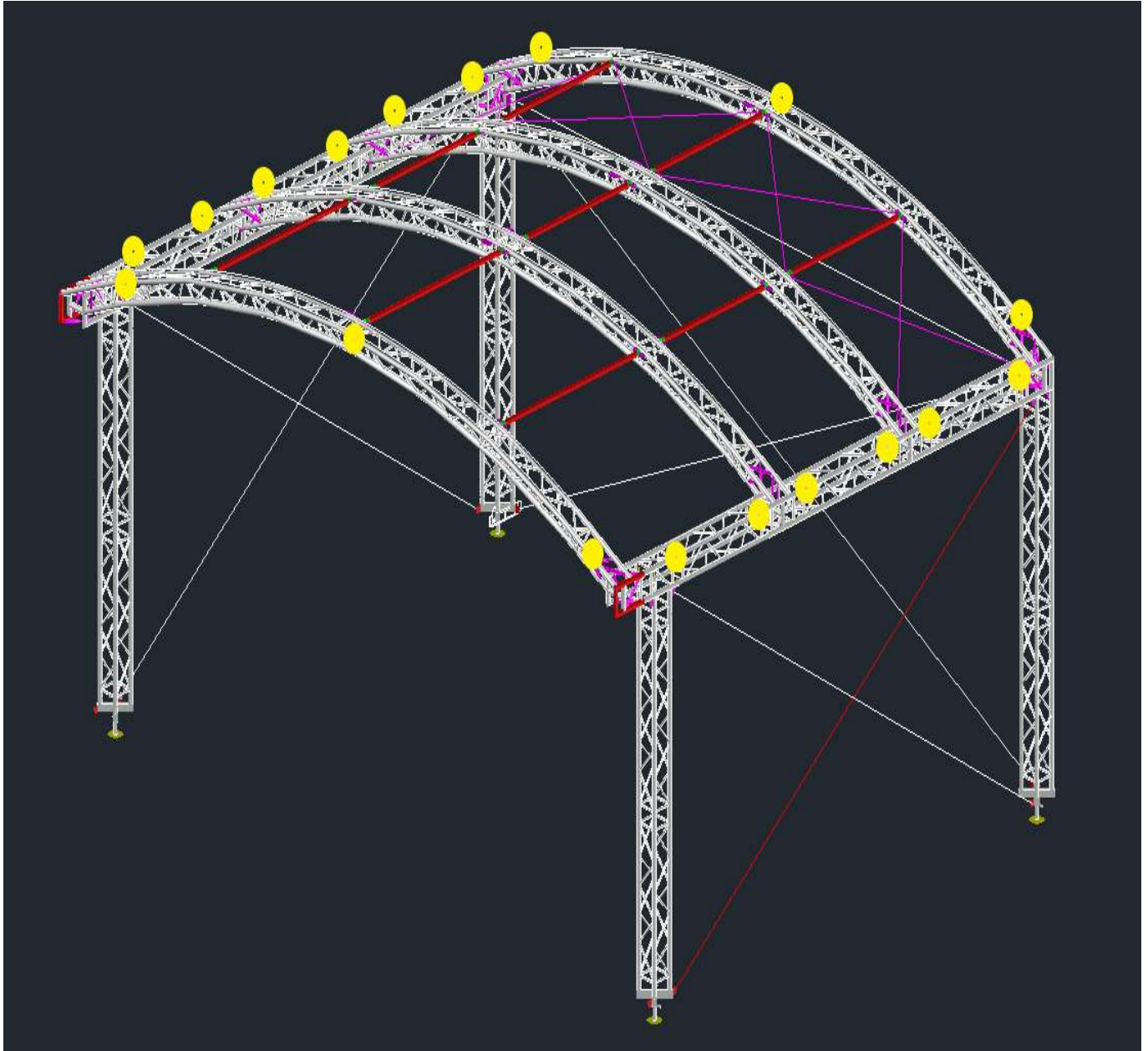
EUOTRUS

EUOTRUS BV
Castorweg 2
8938 BE Leeuwarden
The Netherlands

E-mail: info@eurotruss.com
Website: www.eurotruss.com
Telephone: +31 (0)58 215 88 88
Telefax: +31 (0)58 215 81 11

P.O. Box 7511 • 8903 JM Leeuwarden • The Netherlands

You find the places where the Velcro protector is necessary at the yellow marked position.





EUROTRUSS

EUROTRUSS BV
Castorweg 2
8938 BE Leeuwarden
The Netherlands

E-mail: info@eurotruss.com
Website: www.eurotruss.com
Telephone: +31 (0)58 215 88 88
Telefax: +31 (0)58 215 81 11

P.O. Box 7511 • 8903 JM Leeuwarden • The Netherlands

Step 2:

At the frontend and backend, you find eyes.
Mount each eye a rubberloop with S-hook.



rubberloop with S-hook



EUROTRUSS

EUROTRUSS BV
Castorweg 2
8938 BE Leeuwarden
The Netherlands

E-mail: info@eurotruss.com
Website: www.eurotruss.com
Telephone: +31 (0)58 215 88 88
Telefax: +31 (0)58 215 81 11

P.O. Box 7511 • 8903 JM Leeuwarden • The Netherlands

Step 3:

Begin with spreading the tarpaulin over the roof truss.

The Back side is the side with a Velcro stripe at the end.

This Velcro stripe has to be on the outside.

Position and stretch the roof first with the Lashing strap using the D-Ring on top.

When the roof lays correct on the truss, place the tubes in the hemstitch on right and left side.



EUROTRUSS

EUROTRUSS BV
Castorweg 2
8938 BE Leeuwarden
The Netherlands

E-mail: info@eurotruss.com
Website: www.eurotruss.com
Telephone: +31 (0)58 215 88 88
Telefax: +31 (0)58 215 81 11

P.O. Box 7511 • 8903 JM Leeuwarden • The Netherlands

Step 4:

Place the lashingstrap at the tubes in the Hemstitch and tighten the roof crosswise. The lashingstrap is mounted, like shown on the pictures below:



In this case the D-ring is replaced by a tube



Placing the ratchet under the truss



EUROTRUSS

EUROTRUSS BV
Castorweg 2
8938 BE Leeuwarden
The Netherlands

E-mail: info@eurotruss.com
Website: www.eurotruss.com
Telephone: +31 (0)58 215 88 88
Telefax: +31 (0)58 215 81 11

P.O. Box 7511 • 8903 JM Leeuwarden • The Netherlands

Step 6:

Connect the frontend and backend to the truss, using the rubberloops with S-hook.





EUROTRUSS

EUROTRUSS BV
Castorweg 2
8938 BE Leeuwarden
The Netherlands

E-mail: info@eurotruss.com
Website: www.eurotruss.com
Telephone: +31 (0)58 215 88 88
Telefax: +31 (0)58 215 81 11

P.O. Box 7511 • 8903 JM Leeuwarden • The Netherlands

Installation instructions backwall cover:

RF-AR10-PB8

Step 1:

Start with mounting the rubberloop to backwall cover as shown:



If you ask, which side is inside, the **Hemstitch and the Labels are inside**



EUROTRUSS

EUROTRUSS BV
Castorweg 2
8938 BE Leeuwarden
The Netherlands

E-mail: info@eurotruss.com
Website: www.eurotruss.com
Telephone: +31 (0)58 215 88 88
Telefax: +31 (0)58 215 81 11

P.O. Box 7511 • 8903 JM Leeuwarden • The Netherlands

Step 2:

Mount the backwall cover to the truss, following the displayed steps:



Connect last rubberloop with remote control hook to truss like picture below:





EUROTRUSS

EUROTRUSS BV
Castorweg 2
8938 BE Leeuwarden
The Netherlands

E-mail: info@eurotruss.com
Website: www.eurotruss.com
Telephone: +31 (0)58 215 88 88
Telefax: +31 (0)58 215 81 11

P.O. Box 7511 • 8903 JM Leeuwarden • The Netherlands

Step 3:

Place a tube in the hemstitch at the bottom of the tarpaulin.





EUROTRUSS

EUROTRUSS BV
Castorweg 2
8938 BE Leeuwarden
The Netherlands

E-mail: info@eurotruss.com
Website: www.eurotruss.com
Telephone: +31 (0)58 215 88 88
Telefax: +31 (0)58 215 81 11

P.O. Box 7511 • 8903 JM Leeuwarden • The Netherlands

Installation instructions sidewall cover:

RF-AR10-PS6L and RF-AR10-PS6R

Step 1:

Start with mounting the rubberloop to sidewall cover as shown:



If you ask, which side is inside, the **Hemstitch and the Labels are inside**



EUROTRUSS

EUROTRUSS BV
Castorweg 2
8938 BE Leeuwarden
The Netherlands

E-mail: info@eurotruss.com
Website: www.eurotruss.com
Telephone: +31 (0)58 215 88 88
Telefax: +31 (0)58 215 81 11

P.O. Box 7511 • 8903 JM Leeuwarden • The Netherlands

Step 2:

Mount the sidewall cover to the truss, following the displayed steps:



Connect last rubberloop with remote control hook to truss like picture below:





EUROTRUSS

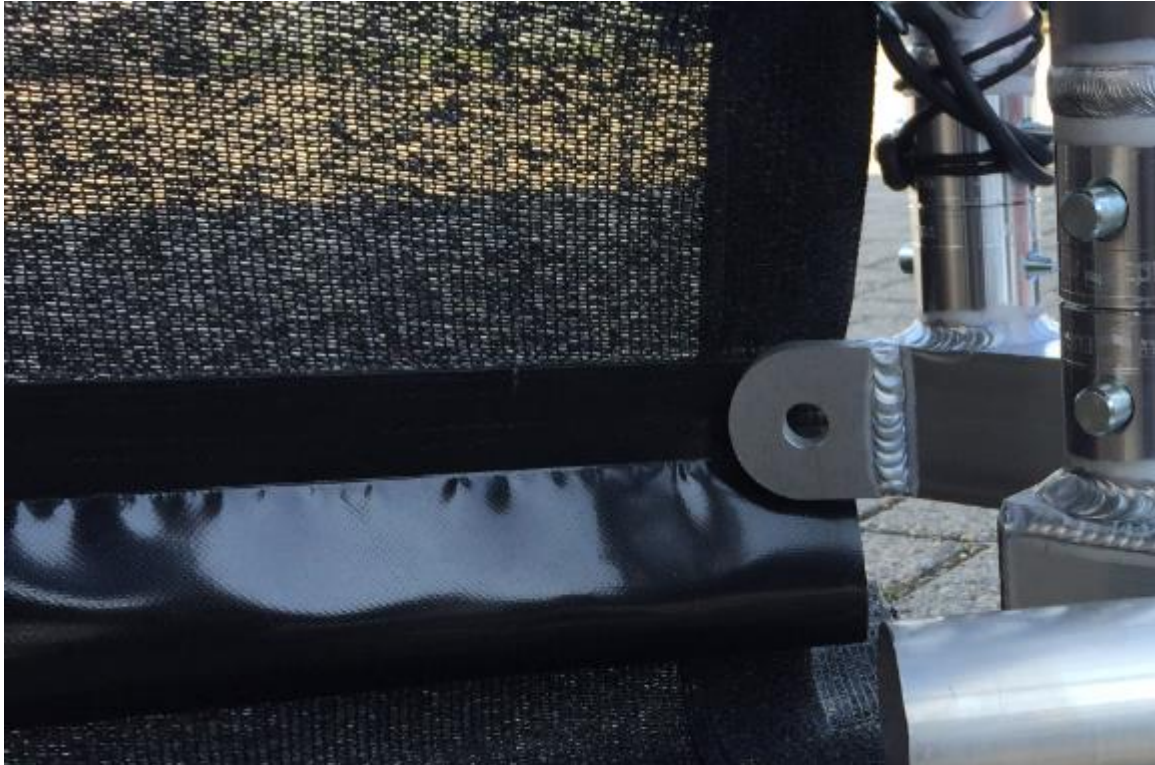
EUROTRUSS BV
Castorweg 2
8938 BE Leeuwarden
The Netherlands

E-mail: info@eurotruss.com
Website: www.eurotruss.com
Telephone: +31 (0)58 215 88 88
Telefax: +31 (0)58 215 81 11

P.O. Box 7511 • 8903 JM Leeuwarden • The Netherlands

Step 3:

Place a tube in the hemstitch at the bottom of the tarpaulin.





EUROTRUSS

EUROTRUSS BV
Castorweg 2
8938 BE Leeuwarden
The Netherlands

E-mail: info@eurotruss.com
Website: www.eurotruss.com
Telephone: +31 (0)58 215 88 88
Telefax: +31 (0)58 215 81 11

P.O. Box 7511 • 8903 JM Leeuwarden • The Netherlands

Installation instructions flap:

Step 1:

At the right and left edge, you find eyes.
Mount each eye a rubberloop with S-hook.



Step 2:

Place the flap at the end of the roof, connecting the Velcro.

Step 3:

Fix the edges using the rubberloop with S-hook.



EUROTRUSS

EUROTRUSS BV
Castorweg 2
8938 BE Leeuwarden
The Netherlands

E-mail: info@eurotruss.com
Website: www.eurotruss.com
Telephone: +31 (0)58 215 88 88
Telefax: +31 (0)58 215 81 11

P.O. Box 7511 • 8903 JM Leeuwarden • The Netherlands

Dismount:

To dismount backwallcover pull on cord, connected to remote controlled hock.



Pull until the hook opens.



The inner connection will detach



EUROTRUSS

EUROTRUSS BV
Castorweg 2
8938 BE Leeuwarden
The Netherlands

E-mail: info@eurotruss.com
Website: www.eurotruss.com
Telephone: +31 (0)58 215 88 88
Telefax: +31 (0)58 215 81 11

P.O. Box 7511 • 8903 JM Leeuwarden • The Netherlands

Folding tarpaulin:

Important is to fold roof and wall covers as we describe below.

The folded cover has to be 80cm x 120cm to fit in bag, see pictures below.

